



**REDWOOD  
ACADEMY**



# SCHOOL **PROSPECTUS**

**GROWING FUTURE LEADERS THROUGH  
EXCELLENCE, INNOVATION & CARE**



[admissions@redwoodacademy.co.za](mailto:admissions@redwoodacademy.co.za)  
[www.redwoodacademy.co.za](http://www.redwoodacademy.co.za)



**011 852 4744**



**20 TOPAAS STREET  
EXTENSION 7  
LENASIA**



## WHY CHOOSE REDWOOD ACADEMY ?

### NURTURING LEARNING ENVIRONMENT

We create a positive and supportive environment where learners feel inspired, valued and motivated to succeed academically and personally.

### DEDICATED EDUCATORS

Our passionate and experienced educators are committed to helping every learner reach their full potential.

### TECHNOLOGY-ENHANCED LEARNING

Interactive technology and modern teaching methods are integrated into daily learning to keep learners engaged and future-ready.

### INDIVIDUAL ATTENTION

Small class environments allow educators to understand each learner's strengths and provide personalised academic support.

### HOLISTIC DEVELOPMENT

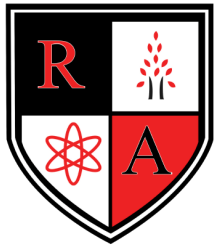
We focus on academic excellence while also developing confidence, leadership, creativity and strong values.

COGITATIO  
ET  
HONEREM

RESPECT  
YOUR MIND,  
HONOUR  
YOUR HEART

THOUGHT  
&  
HONOUR





# REDWOOD ACADEMY

## F Foundation Phase GRADES 1 TO 3

### FOUNDATION PHASE OVERVIEW



The Foundation Phase at Redwood Academy provides learners with a strong academic and emotional foundation during their most important developmental years.

Our educators create engaging and stimulating learning experiences that combine academics, creativity, movement and play in a balanced environment.

Small class sizes ensure that every learner receives individual attention and support while developing confidence, independence and a love for learning.



We strive to create a warm, structured and inclusive environment where every child feels valued and encouraged to thrive.

### GRADE 1 ORIENTATION

Our Grade 1 Orientation Program is designed to help learners transition smoothly into formal schooling.

During the first weeks of school, learners are gently introduced to classroom routines, expectations and foundational learning skills while parents are guided through the process with dedicated orientation support.



admissions@redwoodacademy.co.za  
www.redwoodacademy.co.za



20 Topaas Street  
Extension 7  
Lenasia



011 852 4744

## EXTRA-CURRICULAR ENRICHMENT

A variety of enrichment activities are offered to complement the academic program and encourage creativity, confidence and personal growth. Programs may vary depending on demand and availability.

Extra-curriculars will be offered based on demand.

- Arts and Crafts
- Cubs Cricket
- Kids Aroma Therapy
- Li'l Einsteins Science and Tech
- Playball Kinesthetics
- Logschool Coding
- Islamic Studies (Madressah Optional at an extra cost.)
- Celeb Kids



## SPORTS & PHYSICAL DEVELOPMENT

Redwood Academy encourages active participation in sport as part of a balanced educational experience.

Learners have opportunities to participate in various sporting activities aimed at promoting teamwork, discipline, confidence, fitness and school spirit.

The school participates in inter-school sporting activities and continues to expand its sporting offering and facilities.

The following sports are offered:

- DWAF Tennis
- Soccer - Wolves
- Netball
- Table Tennis
- Chess
- Swimming classes

We are affiliated to the Lenasia Sports Schools and compete in inter-school fixtures with other schools in Lenasia.

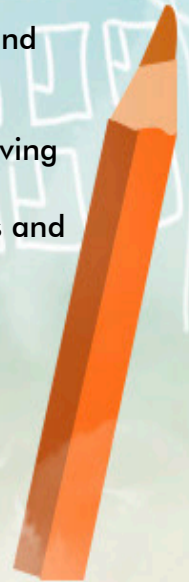


## TECHNOLOGY, CODING & ROBOTICS

Technology forms an important part of the Redwood Academy learning experience. Classrooms are equipped with interactive teaching technology including projectors and smart screens to enhance learner engagement.

Learners are introduced to Coding, Robotics, Computer Literacy and emerging technologies through practical and interactive lessons designed to build problem-solving and critical-thinking skills.

Virtual Reality experiences and robotics programs further enrich the learning process and expose learners to future-focused education.



## SCHOOL TIMES

<b>Monday to Thursday:</b>	8:15am – 1:30pm
<b>Friday:</b>	8:15am – 11:45am

## FEE STRUCTURE FOR 2027

<b>Monthly fee:</b>	R 5 100 per month	Payable over 12 months
<b>Registration fee:</b>	New Applicants - R 2 800	Current learners - R 2 000
<b>After Care:</b>	R 950 per month	Payable over 11 months
AFTER CARE IS AVAILABLE MONDAY - FRIDAY UNTIL 17:00		

STEPS TO

**APPLY:**



**STEP 1**

Visit our Applications Portal at:  
<https://redwoodlenasia.d6plus.co.za/register/>

OR

Visit [www.redwoodacademy.co.za](http://www.redwoodacademy.co.za), choose a campus and click on Apply Now.



**STEP 2**

Fill out the application form online as completely and accurately as possible.



**STEP 3**

Upload the required documents for the learner and parents viz:

- IDs
- Birth certificate
- Latest Term 2/4 report card
- Etc.



**STEP 4**

If your application is successful, a confirmation email will be sent to you with a contract, agreement, declaration and an indemnity.

Please complete and return the signed contracts to [admissions@redwoodacademy.co.za](mailto:admissions@redwoodacademy.co.za) to complete the enrolment process.



**WELCOME TO THE REDWOOD FAMILY!**

*Learn to love school !!*



## REDWOOD ACADEMY

“

### *The Redwood Tree*

My father once told me a story about an old Redwood tree –  
How she stood tall and proud –  
Her sprawling limbs clothed in emerald green.

With a smile,  
he described how she was a mere sapling -  
sheltered by her family and basking  
in the safety of the warm, dappled light.

But as this tree grew taller,  
she found herself at the mercy of the cruel wind and the vicious rain.  
Together, they tore relentlessly at her pretty boughs,  
until she felt as though her heart would splinter.

After a long, thoughtful pause, my father turned to me and said:  
“One day, the same may happen to you, and when that day comes –  
remember the Redwood tree.

Do not worry about the cold wind and the vicious rain –  
do as that tree did and just keep growing”

